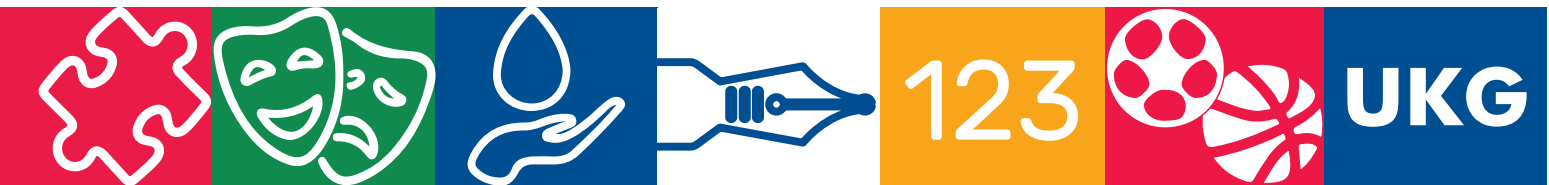




Sant Nandlal
Smriti Vidya Mandir

MALSISAR, RAJASTHAN

Affiliated to CBSE | Affiliation No. 1731249



HOLISTIC
PROGRESS
CARD
UKG
SESSION 2026-27



Affix
Photo
Here

STUDENT'S PROFILE

NAME _____

SECTION _____ ENROLMENT NO _____

DATE OF BIRTH _____



Capturing My Journey: A Visual Celebration

My Learning Adventures

TERM I

A large, empty white rectangular area intended for students to draw and illustrate their learning journey.

DOMAIN-PHYSICAL DEVELOPMENT



Children develop habits that keep them healthy and safe

COMPETENCIES	Beginner	Emerging	Progressing	Proficient	Outstanding
Follows healthy eating habits and mealtime routines					
Practises healthy habits and personal hygiene					
Follows safety rules and shows awareness of personal safety					
Manages personal belongings responsibly					

Children develop sharpness in sensorial perceptions

COMPETENCIES	Beginner	Emerging	Progressing	Proficient	Outstanding
Identifies and differentiates sensory attributes (colour, shape, texture, sound, smell, taste)					
Sorts and groups objects based on properties/characteristics					

Children develop a fit and flexible body

COMPETENCIES	Beginner	Emerging	Progressing	Proficient	Outstanding
Demonstrates coordination, balance and flexibility					
Participates in games and follows rules					
Shows fine motor control (hands, fingers)					





DOMAIN–SOCIO–EMOTIONAL AND ETHICAL DEVELOPMENT

Children develop emotional intelligence

COMPETENCIES	Beginner	Emerging	Progressing	Proficient	Outstanding
Demonstrates positive social behaviour (polite, kind, follows rules)					
Interacts and cooperates well with peers					
Expresses and manages emotions appropriately					

Children develop a positive attitude towards productive work and service or 'seva'

COMPETENCIES	Beginner	Emerging	Progressing	Proficient	Outstanding
Shows responsibility by lending a helping hand					
Demonstrates responsibility towards shared spaces					

Children develop a positive regard for the natural environment around them

COMPETENCIES	Beginner	Emerging	Progressing	Proficient	Outstanding
Shows sensitivity towards plants and animals					
Is curious about natural surroundings					





DOMAIN-COGNITIVE DEVELOPMENT

Children make sense of the world around them through observation and logical thinking

COMPETENCIES	Beginner	Emerging	Progressing	Proficient	Outstanding
Observes and understands different categories of objects and relationships					
Demonstrates responsible behaviour towards water usage					
Applies learning to new and real-life situations					
Observes and understands cause-and-effect relationships					

Children develop mathematical understanding and abilities to recognise the world through quantities and shapes

COMPETENCIES	Beginner	Emerging	Progressing	Proficient	Outstanding
Demonstrates number sense (counting, sequencing, number names)					
Performs basic operations (addition and subtraction using objects/pictures)					
Compares and classifies quantities (more/less, big/small, heavy light)					
Identifies, names and uses basic shapes (circle, square, triangle, rectangle)					
Recognises and creates simple patterns (objects, shapes, numbers)					





DOMAIN—LANGUAGE AND LITERACY DEVELOPMENT

Children develop effective communication skills for day–to–day interactions

COMPETENCIES	Beginner	Emerging	Progressing	Proficient	Outstanding
Listens attentively and follows instructions					
Communicates confidently using appropriate vocabulary					
Comprehends and responds to stories, pictures, and conversations					

Children develop fluency in reading and writing in language 1 (English)

COMPETENCIES	Beginner	Emerging	Progressing	Proficient	Outstanding
Reads and comprehends simple texts with accuracy and fluency					
Is able to spell and write simple words					
Writes sentences using correct grammar and structure					
Demonstrates legible handwriting and written expression					

Children develop fluency in reading and writing in language 2 (Hindi)

COMPETENCIES	Beginner	Emerging	Progressing	Proficient	Outstanding
Listens to and recognises sounds and words					
Understands and interprets what is read					
Is able to spell and write simple words					
Writes neatly with proper letter formation and spacing					

123



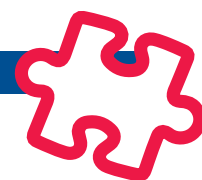
DOMAIN–AESTHETIC AND CULTURAL DEVELOPMENT

Children develop abilities and sensibilities in visual and performing arts and express their emotions through arts in meaningful and joyful ways

COMPETENCIES	Beginner	Emerging	Progressing	Proficient	Outstanding
Art & Craft					
Enjoys and participates in art activities					
Colours neatly and creates artwork using imagination					
Music					
Enjoys music and sings in tune					
Shows a sense of rhythm					
Dance					
Enjoys dancing and expresses through movement					
Shows rhythm and graceful movements					

POSITIVE LEARNING HABITS

Children develop habits of learning that allow them to engage actively in formal learning environments such as a school classroom



COMPETENCIES	Beginner	Emerging	Progressing	Proficient	Outstanding
Participates in class activities					
Is able to work independently					
Shows progress in following assigned tasks and practising self-control					
Expresses ideas using simple words and sentences					
Follows simple classroom rules					
Maintains a neat and tidy appearance					





A large, empty white rectangular area intended for taking notes, framed by a dark blue border.



Capturing My Journey: A Visual Celebration

My Learning Adventures

TERM II

A large, empty white rectangular area intended for students to draw and illustrate their learning journey.

DOMAIN-PHYSICAL DEVELOPMENT



Children develop habits that keep them healthy and safe

COMPETENCIES	Beginner	Emerging	Progressing	Proficient	Outstanding
Follows healthy eating habits and mealtime routines					
Practises healthy habits and personal hygiene					
Follows safety rules and shows awareness of personal safety					
Manages personal belongings responsibly					

Children develop sharpness in sensorial perceptions

COMPETENCIES	Beginner	Emerging	Progressing	Proficient	Outstanding
Identifies and differentiates sensory attributes (colour, shape, texture, sound, smell, taste)					
Sorts and groups objects based on properties/characteristics					

Children develop a fit and flexible body

COMPETENCIES	Beginner	Emerging	Progressing	Proficient	Outstanding
Demonstrates coordination, balance and flexibility					
Participates in games and follows rules					
Shows fine motor control (hands, fingers)					





DOMAIN–SOCIO–EMOTIONAL AND ETHICAL DEVELOPMENT

Children develop emotional intelligence

COMPETENCIES	Beginner	Emerging	Progressing	Proficient	Outstanding
Demonstrates positive social behaviour (polite, kind, follows rules)					
Interacts and cooperates well with peers					
Expresses and manages emotions appropriately					

Children develop a positive attitude towards productive work and service or 'seva'

COMPETENCIES	Beginner	Emerging	Progressing	Proficient	Outstanding
Shows responsibility by lending a helping hand					
Demonstrates responsibility towards shared spaces					

Children develop a positive regard for the natural environment around them

COMPETENCIES	Beginner	Emerging	Progressing	Proficient	Outstanding
Shows sensitivity towards plants and animals					
Is curious about natural surroundings					





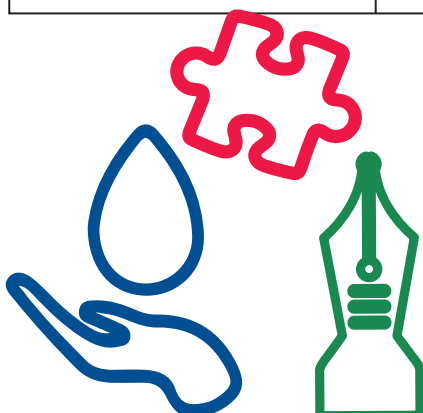
DOMAIN-COGNITIVE DEVELOPMENT

Children make sense of the world around them through observation and logical thinking

COMPETENCIES	Beginner	Emerging	Progressing	Proficient	Outstanding
Observes and understands different categories of objects and relationships					
Demonstrates responsible behaviour towards water usage					
Applies learning to new and real-life situations					
Observes and understands cause-and-effect relationships					

Children develop mathematical understanding and abilities to recognise the world through quantities and shapes

COMPETENCIES	Beginner	Emerging	Progressing	Proficient	Outstanding
Demonstrates number sense (counting, sequencing, number names, basic place value)					
Performs basic operations (addition and subtraction using objects/pictures)					
Compares and classifies quantities (more/less, equal, big/small)					
Identifies, names and uses basic shapes (circle, square, triangle, rectangle)					
Recognises and creates simple patterns (objects, shapes, numbers)					





DOMAIN–LANGUAGE AND LITERACY DEVELOPMENT

Children develop effective communication skills for day–to–day interactions

COMPETENCIES	Beginner	Emerging	Progressing	Proficient	Outstanding
Listens attentively and follows instructions					
Communicates confidently using appropriate vocabulary					
Comprehends and responds to stories, pictures, and conversations					

Children develop fluency in reading and writing in language 1 (English)

COMPETENCIES	Beginner	Emerging	Progressing	Proficient	Outstanding
Reads and comprehends simple texts with accuracy and fluency					
Is able to spell and write simple words					
Writes sentences using correct grammar and structure					
Demonstrates legible handwriting and written expression					

Children develop fluency in reading and writing in language 2 (Hindi)

COMPETENCIES	Beginner	Emerging	Progressing	Proficient	Outstanding
Listens to and recognises sounds and words					
Understands and interprets what is read					
Is able to spell and write simple words					
Writes neatly with proper letter formation and spacing					

123



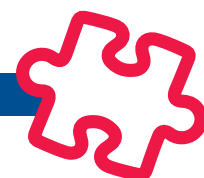
DOMAIN–AESTHETIC AND CULTURAL DEVELOPMENT

Children develop abilities and sensibilities in visual and performing arts and express their emotions through arts in meaningful and joyful ways

COMPETENCIES	Beginner	Emerging	Progressing	Proficient	Outstanding
Art & Craft					
Enjoys and participates in art activities					
Colours neatly and creates artwork using imagination					
Music					
Enjoys music and sings in tune					
Shows a sense of rhythm					
Dance					
Enjoys dancing and expresses through movement					
Shows rhythm and graceful movements					

POSITIVE LEARNING HABITS

Children develop habits of learning that allow them to engage actively in formal learning environments such as a school classroom



COMPETENCIES	Beginner	Emerging	Progressing	Proficient	Outstanding
Participates in class activities					
Is able to work independently					
Shows progress in following assigned tasks and practising self-control					
Expresses ideas using simple words and sentences					
Follows simple classroom rules					
Maintains a neat and tidy appearance					





LEARNER'S PROFILE

TERM II



CLASSROOM ATTENDANCE

TOTAL NUMBER OF WORKING DAYS _____

NUMBER OF DAYS PRESENT _____

PERCENTAGE OF ATTENDANCE _____

Class Teacher

Principal

Parent





A large, empty white rectangular area that serves as a space for taking notes. It is bounded by a thin white line on its top, left, and right sides, and is set against a dark blue background.



Capturing My Journey: A Visual Celebration

My Learning Adventures

TERM III

A large, empty white rectangular area intended for students to draw or write their learning adventures.

DOMAIN-PHYSICAL DEVELOPMENT



Children develop habits that keep them healthy and safe

COMPETENCIES	Beginner	Emerging	Progressing	Proficient	Outstanding
Follows healthy eating habits and mealtime routines					
Practises healthy habits and personal hygiene					
Follows safety rules and shows awareness of personal safety					
Manages personal belongings responsibly					

Children develop sharpness in sensorial perceptions

COMPETENCIES	Beginner	Emerging	Progressing	Proficient	Outstanding
Identifies and differentiates sensory attributes (colour, shape, texture, sound, smell, taste)					
Sorts and groups objects based on properties/characteristics					

Children develop a fit and flexible body

COMPETENCIES	Beginner	Emerging	Progressing	Proficient	Outstanding
Demonstrates coordination, balance and flexibility					
Participates in games and follows rules					
Shows fine motor control (hands, fingers)					





DOMAIN–SOCIO–EMOTIONAL AND ETHICAL DEVELOPMENT

Children develop emotional intelligence

COMPETENCIES	Beginner	Emerging	Progressing	Proficient	Outstanding
Demonstrates positive social behaviour (polite, kind, follows rules)					
Interacts and cooperates well with peers					
Expresses and manages emotions appropriately					

Children develop a positive attitude towards productive work and service or 'seva'

COMPETENCIES	Beginner	Emerging	Progressing	Proficient	Outstanding
Shows responsibility by lending a helping hand					
Demonstrates responsibility towards shared spaces					

Children develop a positive regard for the natural environment around them

COMPETENCIES	Beginner	Emerging	Progressing	Proficient	Outstanding
Shows sensitivity towards plants and animals					
Is curious about natural surroundings					





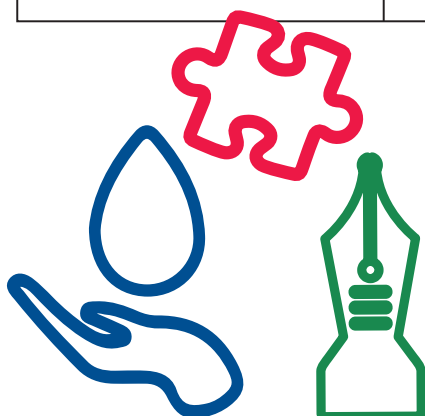
DOMAIN-COGNITIVE DEVELOPMENT

Children make sense of the world around them through observation and logical thinking

COMPETENCIES	Beginner	Emerging	Progressing	Proficient	Outstanding
Observes and understands different categories of objects and relationships					
Demonstrates responsible behaviour towards water usage					
Applies learning to new and real-life situations					
Observes and understands cause-and-effect relationships					

Children develop mathematical understanding and abilities to recognise the world through quantities and shapes

COMPETENCIES	Beginner	Emerging	Progressing	Proficient	Outstanding
Demonstrates number sense (counting, sequencing, number names, basic place value)					
Performs basic operations (addition and subtraction using objects/pictures)					
Compares and classifies quantities (more/less, equal, big/small)					
Identifies, names and uses basic shapes (circle, square, triangle, rectangle)					
Recognises and creates simple patterns (objects, shapes, numbers)					





DOMAIN—LANGUAGE AND LITERACY DEVELOPMENT

Children develop effective communication skills for day–to–day interactions

COMPETENCIES	Beginner	Emerging	Progressing	Proficient	Outstanding
Listens attentively and follows instructions					
Communicates confidently using appropriate vocabulary					
Comprehends and responds to stories, pictures, and conversations					

Children develop fluency in reading and writing in language 1 (English)

COMPETENCIES	Beginner	Emerging	Progressing	Proficient	Outstanding
Reads and comprehends simple texts with accuracy and fluency					
Is able to spell and write simple words					
Writes sentences using correct grammar and structure					
Demonstrates legible handwriting and written expression					

Children develop fluency in reading and writing in language 2 (Hindi)

COMPETENCIES	Beginner	Emerging	Progressing	Proficient	Outstanding
Listens to and recognises sounds and words					
Understands and interprets what is read					
Is able to spell and write simple words					
Writes neatly with proper letter formation and spacing					

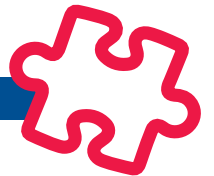
123



DOMAIN—AESTHETIC AND CULTURAL DEVELOPMENT

Children develop abilities and sensibilities in visual and performing arts and express their emotions through arts in meaningful and joyful ways

COMPETENCIES	Beginner	Emerging	Progressing	Proficient	Outstanding
Art & Craft					
Enjoys and participates in art activities					
Colours neatly and creates artwork using imagination					
Music					
Enjoys music and sings in tune					
Shows a sense of rhythm					
Dance					
Enjoys dancing and expresses through movement					
Shows rhythm and graceful movements					



POSITIVE LEARNING HABITS

Children develop habits of learning that allow them to engage actively in formal learning environments such as a school classroom

COMPETENCIES	Beginner	Emerging	Progressing	Proficient	Outstanding
Participates in class activities					
Is able to work independently					
Shows progress in following assigned tasks and practising self-control					
Expresses ideas using simple words and sentences					
Follows simple classroom rules					
Maintains a neat and tidy appearance					





LEARNER'S PROFILE

TERM III



CLASSROOM ATTENDANCE

TOTAL NUMBER OF WORKING DAYS _____

NUMBER OF DAYS PRESENT _____

PERCENTAGE OF ATTENDANCE _____

Class Teacher

Principal

Parent





A large, empty white rectangular area occupying the majority of the page, intended for handwritten notes.



Overall Annual Performance Summary



DOMAIN—PHYSICAL DEVELOPMENT



Children develop habits that keep them healthy and safe

COMPETENCIES	TERM I	TERM II	TERM III
Follows healthy eating habits and mealtime routines			
Practises healthy habits and personal hygiene			
Follows safety rules and shows awareness of personal safety			
Manages personal belongings responsibly			

Children develop sharpness in sensorial perceptions

COMPETENCIES	TERM I	TERM II	TERM III
Identifies and differentiates sensory attributes (colour, shape, texture, sound, smell, taste)			
Sorts and groups objects based on properties/characteristics			

Children develop a fit and flexible body

COMPETENCIES	TERM I	TERM II	TERM III
Demonstrates coordination, balance and flexibility			
Participates in games and follows rules			
Shows fine motor control (hands, fingers)			





DOMAIN–SOCIO–EMOTIONAL AND ETHICAL DEVELOPMENT

Children develop emotional intelligence

COMPETENCIES	TERM I	TERM II	TERM III
Demonstrates positive social behaviour (polite, kind, follows rules)			
Interacts and cooperates well with peers			
Expresses and manages emotions appropriately			

Children develop a positive attitude towards productive work and service or 'seva'

COMPETENCIES	TERM I	TERM II	TERM III
Shows responsibility by lending a helping hand			
Demonstrates responsibility towards shared spaces			

Children develop a positive regard for the natural environment around them

COMPETENCIES	TERM I	TERM II	TERM III
Shows sensitivity towards plants and animals			
Is curious about natural surroundings			





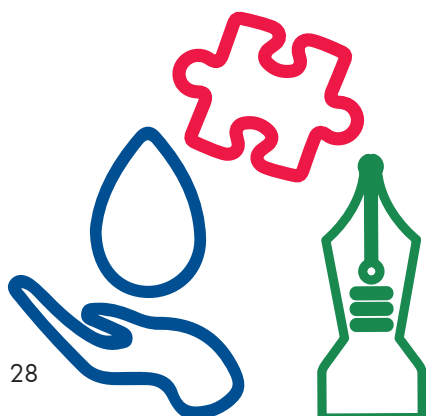
DOMAIN-COGNITIVE DEVELOPMENT

Children make sense of the world around them through observation and logical thinking

COMPETENCIES	TERM I	TERM II	TERM III
Observes and understands different categories of objects and relationships			
Demonstrates responsible behaviour towards water usage			
Applies learning to new and real-life situations			
Observes and understands cause-and-effect relationships			

Children develop mathematical understanding and abilities to recognise the world through quantities and shapes

COMPETENCIES	TERM I	TERM II	TERM III
Demonstrates number sense (counting, sequencing, number names, basic place value)			
Performs basic operations (addition and subtraction using objects/pictures)			
Compares and classifies quantities (more/less, equal, big/small)			
Identifies, names and uses basic shapes (circle, square, triangle, rectangle)			
Recognises and creates simple patterns (objects, shapes, numbers)			





DOMAIN–LANGUAGE AND LITERACY DEVELOPMENT

Children develop effective communication skills for day–to–day interactions

COMPETENCIES	TERM I	TERM II	TERM III
Listens attentively and follows instructions			
Communicates confidently using appropriate vocabulary			
Comprehends and responds to stories, pictures and conversations			

Children develop fluency in reading and writing in language 1 (English)

COMPETENCIES	TERM I	TERM II	TERM III
Reads and comprehends simple texts with accuracy and fluency			
Is able to spell and write simple words			
Writes sentences using correct grammar and structure			
Demonstrates legible handwriting and written expression			

Children develop fluency in reading and writing in language 2 (Hindi)

COMPETENCIES	TERM I	TERM II	TERM III
Listens to and recognises sounds and words			
Understands and interprets what is read			
Is able to spell and write simple words			
Writes neatly with proper letter formation and spacing			

123



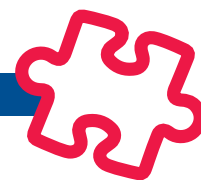
DOMAIN–AESTHETIC AND CULTURAL DEVELOPMENT

Children develop abilities and sensibilities in visual and performing arts and express their emotions through arts in meaningful and joyful ways

COMPETENCIES	TERM I	TERM II	TERM III
Art & Craft			
Enjoys and participates in art activities			
Colours neatly and creates artwork using imagination			
Music			
Enjoys music and sings in tune			
Shows a sense of rhythm			
Dance			
Enjoys dancing and expresses through movement			
Shows rhythm and graceful movements			

POSITIVE LEARNING HABITS

Children develop habits of learning that allow them to engage actively in formal learning environments such as a school classroom



COMPETENCIES	TERM I	TERM II	TERM III
Participates in class activities			
Is able to work independently			
Shows progress in following assigned tasks and practising self-control			
Expresses ideas using simple words and sentences			
Follows simple classroom rules			
Maintains a neat and tidy appearance			





CUMULATIVE CLASSROOM ATTENDANCE

TOTAL NUMBER OF WORKING DAYS IN THE SESSION _____

TOTAL NUMBER OF DAYS PRESENT IN THE SESSION _____

PERCENTAGE OF ATTENDANCE _____

LEGEND

The competencies are to be interpreted at various levels on the basis of the following description

Level	Competency
Beginner (BG)	Tries to achieve the competency and associated learning outcome with constant support from the teacher
Emerging (EM)	Tries to achieve the competency and associated learning outcome with occasional support from the teacher
Progressing (PR)	Achieves the competency and associated learning outcome with occasional support from the teacher
Proficient (PF)	Achieves the competency and associated learning outcome independently
Outstanding (OS)	Consistently achieves the competency and associated learning outcome independently, demonstrating deep understanding and application

YOU ARE READY TO FLY HIGHER!



Promoted to Class	
Section	
New session begins on	

Class Teacher

Principal

Parent





A large, empty white rectangular area occupying the central portion of the page, intended for handwritten notes.

SCHOOL CAMPUS

Jhatawa Kalan Road, P.O. Malsisar, Dist. Jhunjhunu, Rajasthan 331028

CALL +91 92578 48525

www.snsvm-malsisar.org