



Sant Nandlal
Smriti Vidya Mandir

MALSISAR, RAJASTHAN

Affiliated to CBSE | Affiliation No. 1731249



NURSERY



**HOLISTIC
PROGRESS
CARD**

NURSERY
SESSION 2026-27

**Affix
Photo
Here**

STUDENT'S PROFILE

NAME _____

SECTION _____ ENROLMENT NO _____

DATE OF BIRTH _____



Capturing My Journey: A Visual Celebration

My Learning Adventures

TERM I

A large, empty white rectangular area intended for students to draw and illustrate their learning adventures.

DOMAIN-PHYSICAL DEVELOPMENT



Children develop habits that keep them healthy and safe

COMPETENCIES	Beginner	Emerging	Progressing	Proficient	Outstanding
Recognises healthy food					
Washes hands with assistance					
Eats by self					
Follows classroom rules (waits for one's turn, moves safely in the class)					

Children develop sharpness in sensorial perceptions

COMPETENCIES	Beginner	Emerging	Progressing	Proficient	Outstanding
Recognises colours and simple differences					
Recognises common sounds					
Identifies basic tastes and smells					
Feels and identifies textures					

Children develop a fit and flexible body

COMPETENCIES	Beginner	Emerging	Progressing	Proficient	Outstanding
Walks, runs and balances during play					
Joins outdoor play and activities enthusiastically					
Uses hands for basic tasks					

DOMAIN-SOCIO-EMOTIONAL AND ETHICAL DEVELOPMENT

Children develop emotional intelligence

COMPETENCIES	Beginner	Emerging	Progressing	Proficient	Outstanding
Demonstrates consistent kindness and courtesy					
Plays with others and follows simple rules					
Joins group play and enjoys being with friends					
Expresses feelings through words or actions					





Children develop a positive attitude towards productive work and service or 'seva'

COMPETENCIES	Beginner	Emerging	Progressing	Proficient	Outstanding
Helps in simple tasks (picking up toys, helping teacher)					
Takes care of own things (bag, bottle, books)					

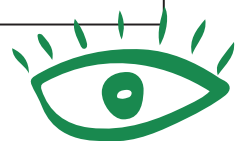
Children develop a positive regard for the natural environment around them

COMPETENCIES	Beginner	Emerging	Progressing	Proficient	Outstanding
Shows sensitivity towards plants and animals					
Shows curiosity about natural surroundings					

DOMAIN-COGNITIVE DEVELOPMENT

Children make sense of the world around them through observation and logical thinking

COMPETENCIES	Beginner	Emerging	Progressing	Proficient	Outstanding
Talks about familiar things (home, school, daily activities)					
Recognises self, family members and familiar people					
Explores plants, animals and surroundings with interest					
Shows curiosity (asks questions, notices things)					



Children develop mathematical understanding and abilities to recognise the world through quantities and shapes

COMPETENCIES	Beginner	Emerging	Progressing	Proficient	Outstanding
Understands simple concepts (1-5)					
Sorts and matches objects (same/different, colours, shapes)					
Recognises and names basic shapes (square, triangle)					
Shows early problem-solving using objects					

DOMAIN-LANGUAGE AND LITERACY DEVELOPMENT

Children develop effective communication skills for day-to-day interactions

COMPETENCIES	Beginner	Emerging	Progressing	Proficient	Outstanding
Listens to songs and short stories					
Recites rhymes and poems with actions					
Speaks using simple words and short sentences					
Follows simple instructions					
Talks about pictures, stories or familiar people					
Uses new words while speaking					
Expresses basic needs (water, toilet)					

Children develop fluency in reading and writing in language 1 (English)

COMPETENCIES	Beginner	Emerging	Progressing	Proficient	Outstanding
Recognises letters					
Draws lines and simple patterns					
Traces letters					





Children develop fluency in reading and writing in language 2 (Hindi)

COMPETENCIES	Beginner	Emerging	Progressing	Proficient	Outstanding
Recognises letters					
Draws lines and simple patterns					
Traces letters					

DOMAIN–AESTHETIC AND CULTURAL DEVELOPMENT

Children develop abilities and sensibilities in visual and performing arts and express their emotions through arts in meaningful and joyful ways

COMPETENCIES	Beginner	Emerging	Progressing	Proficient	Outstanding
Art & Craft					
Enjoys drawing and colouring					
Participates in simple art activities					
Music					
Enjoys music and sings in tune					
Maintains a steady beat					
Dance					
Enjoys moving to music and copying simple actions					
Shows basic body movement					

POSITIVE LEARNING HABITS

Children develop habits of learning that allow them to engage actively in formal learning environments such as a school classroom

COMPETENCIES	Beginner	Emerging	Progressing	Proficient	Outstanding
Participates in class activities with guidance					
Tries to do tasks					
Follows simple routines					



LEARNER'S PROFILE

TERM I



CLASSROOM ATTENDANCE

TOTAL NUMBER OF WORKING DAYS _____

NUMBER OF DAYS PRESENT _____

PERCENTAGE OF ATTENDANCE _____





Capturing My Journey: A Visual Celebration

My Learning Adventures

TERM II

A large, empty white rectangular area intended for students to draw and illustrate their learning adventures.

DOMAIN-PHYSICAL DEVELOPMENT



Children develop habits that keep them healthy and safe

COMPETENCIES	Beginner	Emerging	Progressing	Proficient	Outstanding
Recognises healthy food					
Washes hands with assistance					
Eats by self					
Follows classroom rules (waits for one's turn, moves safely in the class)					

Children develop sharpness in sensorial perceptions

COMPETENCIES	Beginner	Emerging	Progressing	Proficient	Outstanding
Recognises colours and simple differences					
Recognises common sounds					
Identifies basic tastes and smells					
Feels and identifies textures					

Children develop a fit and flexible body

COMPETENCIES	Beginner	Emerging	Progressing	Proficient	Outstanding
Walks, runs and balances during play					
Joins outdoor play and activities enthusiastically					
Uses hands for basic tasks					

DOMAIN-SOCIO-EMOTIONAL AND ETHICAL DEVELOPMENT

Children develop emotional intelligence

COMPETENCIES	Beginner	Emerging	Progressing	Proficient	Outstanding
Demonstrates consistent kindness and courtesy					
Plays with others and follows simple rules					
Joins group play and enjoys being with friends					
Expresses feelings through words or actions					





Children develop a positive attitude towards productive work and service or 'seva'

COMPETENCIES	Beginner	Emerging	Progressing	Proficient	Outstanding
Helps in simple tasks (picking up toys, helping teacher)					
Takes care of own things (bag, bottle, books)					



Children develop a positive regard for the natural environment around them

COMPETENCIES	Beginner	Emerging	Progressing	Proficient	Outstanding
Shows sensitivity towards plants and animals					
Shows curiosity about natural surroundings					

DOMAIN-COGNITIVE DEVELOPMENT

Children make sense of the world around them through observation and logical thinking

COMPETENCIES	Beginner	Emerging	Progressing	Proficient	Outstanding
Talks about familiar things (home, school, daily activities)					
Recognises self, family members and familiar people					
Explores plants, animals and surroundings with interest					
Shows curiosity (asks questions, notices things)					



Children develop mathematical understanding and abilities to recognise the world through quantities and shapes

COMPETENCIES	Beginner	Emerging	Progressing	Proficient	Outstanding
Recognises and counts numbers with objects (1–10), concept of zero					
Understands simple concepts					
Sorts and matches objects (same/different, colours, shapes)					
Recognises and names basic shapes (circle, square, triangle, rectangle)					
Shows early problem-solving using objects					

DOMAIN—LANGUAGE AND LITERACY DEVELOPMENT

Children develop effective communication skills for day-to-day interaction

COMPETENCIES	Beginner	Emerging	Progressing	Proficient	Outstanding
Listens to songs and short stories					
Recites rhymes and poems with actions					
Speaks using simple words and short sentences					
Follows simple instructions					
Talks about pictures, stories or familiar people					
Uses new words while speaking					
Expresses basic needs (water, toilet)					

Children develop fluency in reading and writing in language 1 (English)

COMPETENCIES	Beginner	Emerging	Progressing	Proficient	Outstanding
Recognises letters					
Recognises letter sounds (A-K)					
Recognises and completes mixed patterns					
Traces letters					





Children develop fluency in reading and writing in language 2 (Hindi)

COMPETENCIES	Beginner	Emerging	Progressing	Proficient	Outstanding
Recognises letters					
Associates letters with objects					
Recognises and completes mixed patterns					
Traces letters					

DOMAIN–AESTHETIC AND CULTURAL DEVELOPMENT

Children develop abilities and sensibilities in visual and performing arts and express their emotions through arts in meaningful and joyful ways

COMPETENCIES	Beginner	Emerging	Progressing	Proficient	Outstanding
Art & Craft					
Enjoys drawing and colouring					
Participates in simple art activities					
Music					
Enjoys music and sings in tune					
Maintains a steady beat					
Dance					
Enjoys moving to music and copying simple actions					
Shows basic body movement					

POSITIVE LEARNING HABITS

Children develop habits of learning that allow them to engage actively in formal learning environments such as a school classroom

COMPETENCIES	Beginner	Emerging	Progressing	Proficient	Outstanding
Participates in class activities with guidance					
Attempts tasks independently					
Follows simple routines					



LEARNER'S PROFILE

TERM II



CLASSROOM ATTENDANCE

TOTAL NUMBER OF WORKING DAYS _____

NUMBER OF DAYS PRESENT _____

PERCENTAGE OF ATTENDANCE _____





Capturing My Journey: A Visual Celebration

My Learning Adventures

TERM III

A large, empty white rectangular area intended for students to draw and illustrate their learning adventures.

DOMAIN-PHYSICAL DEVELOPMENT



Children develop habits that keep them healthy and safe

COMPETENCIES	Beginner	Emerging	Progressing	Proficient	Outstanding
Recognises healthy food					
Washes hands with assistance					
Eats by self					
Follows classroom rules (waits for one's turn, moves safely in the class)					

Children develop sharpness in sensorial perceptions

COMPETENCIES	Beginner	Emerging	Progressing	Proficient	Outstanding
Recognises colours and simple differences					
Recognises common sounds					
Identifies basic tastes and smells					
Feels and identifies textures					

Children develop a fit and flexible body

COMPETENCIES	Beginner	Emerging	Progressing	Proficient	Outstanding
Walks, runs and balances during play					
Joins outdoor play and activities enthusiastically					
Uses hands for basic tasks					

DOMAIN-SOCIO-EMOTIONAL AND ETHICAL DEVELOPMENT

Children develop emotional intelligence

COMPETENCIES	Beginner	Emerging	Progressing	Proficient	Outstanding
Demonstrates consistent kindness and courtesy					
Plays with others and follows simple rules					
Joins group play and enjoys being with friends					
Expresses feelings through words or actions					





Children develop a positive attitude towards productive work and service or 'seva'

COMPETENCIES	Beginner	Emerging	Progressing	Proficient	Outstanding
Helps in simple tasks (picking up toys, helping teacher)					
Takes care of own things (bag, bottle, books)					

Children develop a positive regard for the natural environment around them

COMPETENCIES	Beginner	Emerging	Progressing	Proficient	Outstanding
Shows sensitivity towards plants and animals					
Shows curiosity about natural surroundings					

DOMAIN-COGNITIVE DEVELOPMENT

Children make sense of the world around them through observation and logical thinking

COMPETENCIES	Beginner	Emerging	Progressing	Proficient	Outstanding
Talks about familiar things (home, school, daily activities)					
Recognises self, family members and familiar people					
Explores plants, animals and surroundings with interest					
Shows curiosity (asks questions, notices things)					



Children develop mathematical understanding and abilities to recognise the world through quantities and shapes

COMPETENCIES	Beginner	Emerging	Progressing	Proficient	Outstanding
Recognises and counts numbers with objects (1–20)					
Understands simple concepts					
Sorts and matches objects (same/different, colours, shapes)					
Recognises and names basic shapes (circle, square, triangle, rectangle)					
Shows early problem-solving using objects					

DOMAIN—LANGUAGE AND LITERACY DEVELOPMENT

Children develop effective communication skills for day-to-day interactions

COMPETENCIES	Beginner	Emerging	Progressing	Proficient	Outstanding
Listens to songs and short stories					
Recites rhymes and poems with actions					
Speaks using simple words and short sentences					
Follows simple instructions					
Talks about pictures, stories or familiar people					
Uses new words while speaking					
Expresses basic needs (water, toilet)					

Children develop fluency in reading and writing in language 1 (English)

COMPETENCIES	Beginner	Emerging	Progressing	Proficient	Outstanding
Recognises letters					
Recognises letter sounds (a to z)					
Recognises and completes mixed patterns					
Traces letters					





Children develop fluency in reading and writing in language 2 (Hindi)

COMPETENCIES	Beginner	Emerging	Progressing	Proficient	Outstanding
Recognises letters (SWAR)					
Recognises and completes mixed patterns					
Listens to and recognises sounds					
Traces letters					

DOMAIN–AESTHETIC AND CULTURAL DEVELOPMENT

Children develop abilities and sensibilities in visual and performing arts and express their emotions through arts in meaningful and joyful ways

COMPETENCIES	Beginner	Emerging	Progressing	Proficient	Outstanding
Art & Craft					
Enjoys drawing and colouring					
Participates in simple art activities					
Music					
Enjoys music and sings in tune					
Maintains a steady beat					
Dance					
Enjoys moving to music and copying simple actions					
Shows basic body movement					

POSITIVE LEARNING HABITS

Children develop habits of learning that allow them to engage actively in formal learning environments such as a school classroom

COMPETENCIES	Beginner	Emerging	Progressing	Proficient	Outstanding
Participates in class activities with guidance					
Attempts tasks independently					
Follows simple routines					



LEARNER'S PROFILE
TERM III



CLASSROOM ATTENDANCE

TOTAL NUMBER OF WORKING DAYS _____

NUMBER OF DAYS PRESENT _____

PERCENTAGE OF ATTENDANCE _____



Overall Annual Performance Summary



DOMAIN-PHYSICAL DEVELOPMENT

Children develop habits that keep them healthy and safe

COMPETENCIES	TERM I	TERM II	TERM III
Recognises healthy food			
Washes hands with assistance			
Eats by self			
Follows classroom rules (waits for one's turn, moves safely in the class)			

Children develop sharpness in sensorial perceptions

COMPETENCIES	TERM I	TERM II	TERM III
Recognises colours and simple differences			
Recognises common sounds			
Identifies basic tastes and smells			
Feels and identifies textures			

Children develop a fit and flexible body

COMPETENCIES	TERM I	TERM II	TERM III
Walks, runs and balances during play			
Joins outdoor play and activities enthusiastically			
Uses hands for basic tasks			



**DOMAIN–SOCIO–EMOTIONAL AND ETHICAL DEVELOPMENT****Children develop emotional intelligence**

COMPETENCIES	TERM I	TERM II	TERM III
Demonstrates consistent kindness and courtesy			
Plays with others and follows simple rules			
Joins group play and enjoys being with friends			
Expresses feelings through words or actions			

Children develop a positive attitude towards productive work and service or 'seva'

COMPETENCIES	TERM I	TERM II	TERM III
Helps in simple tasks (picking up toys, helping teacher)			
Takes care of own things (bag, bottle, books)			

Children develop a positive regard for the natural environment around them

COMPETENCIES	TERM I	TERM II	TERM III
Shows sensitivity towards plants and animals			
Shows curiosity about natural surroundings			

DOMAIN–COGNITIVE DEVELOPMENT**Children make sense of the world around them through observation and logical thinking**

COMPETENCIES	TERM I	TERM II	TERM III
Talks about familiar things (home, school, daily activities)			
Recognises self, family members and familiar people			
Explores plants, animals and surroundings with interest			
Shows curiosity (asks questions, notices things)			



Children develop mathematical understanding and abilities to recognise the world through quantities and shapes

COMPETENCIES	TERM I	TERM II	TERM III
Recognises and counts numbers with objects (1–15), concept of zero	NA		NA
Recognises and counts numbers with objects (1–20)	NA	NA	
Understands simple concepts			
Sorts and matches objects (same/different, colours, shapes)			
Recognises and names basic shapes (circle, square, triangle, rectangle)			
Shows early problem-solving using objects			

DOMAIN–LANGUAGE AND LITERACY DEVELOPMENT

Children develop effective communication skills for day–to–day interaction

COMPETENCIES	TERM I	TERM II	TERM III
Listens to songs and short stories			
Recites rhymes and poems with actions			
Speaks using simple words and short sentences			
Follows simple instructions			
Talks about pictures, stories or familiar people			
Uses new words while speaking			
Expresses basic needs (water, toilet)			

DOMAIN–LANGUAGE AND LITERACY DEVELOPMENT

Children develop fluency in reading and writing in language 1 (English)

COMPETENCIES	TERM I	TERM II	TERM III
Recognises letters			
Traces letters			
Draws lines and simple patterns		NA	NA
Recognises and completes mixed patterns	NA		
Recognises letter sounds (a to k)	NA		NA
Recognises letter sounds (a to z)	NA	NA	



**Children develop fluency in reading and writing in language 2 (Hindi)**

COMPETENCIES	TERM I	TERM II	TERM III
Recognises letters			
Traces letters			
Draws lines and simple patterns		NA	NA
Recognises and completes mixed patterns	NA		
Recognises letter sounds and associates with objects	NA		

DOMAIN–AESTHETIC AND CULTURAL DEVELOPMENT

Children develop abilities and sensibilities in visual and performing arts and express their emotions through arts in meaningful and joyful ways

COMPETENCIES	TERM I	TERM II	TERM III
Art & Craft			
Enjoys drawing and colouring			
Participates in simple art activities			
Music			
Enjoys music and sings in tune			
Maintains a steady beat			
Dance			
Enjoys moving to music and copying simple actions			
Shows basic body movement			

POSITIVE LEARNING HABITS

Children develop habits of learning that allow them to engage actively in formal learning environments such as a school classroom

COMPETENCIES	TERM I	TERM II	TERM III
Participates in class activities with guidance			
Tries to do tasks		NA	NA
Attempts tasks independently	NA		
Follows simple routines			

NA: Not Applicable



CUMULATIVE CLASSROOM ATTENDANCE

TOTAL NUMBER OF WORKING DAYS IN THE SESSION _____

TOTAL NUMBER OF DAYS PRESENT IN THE SESSION _____

PERCENTAGE OF ATTENDANCE _____

LEGEND

The competencies are to be interpreted at various levels on the basis of the following description

Level	Competency
Beginner (BG)	Tries to achieve the competency and associated learning outcome with constant support from the teacher
Emerging (EM)	Tries to achieve the competency and associated learning outcome with occasional support from the teacher
Progressing (PR)	Achieves the competency and associated learning outcome with occasional support from the teacher
Proficient (PF)	Achieves the competency and associated learning outcome independently
Outstanding (OS)	Consistently achieves the competency and associated learning outcome independently, demonstrating deep understanding and application

YOU ARE READY TO FLY HIGHER!



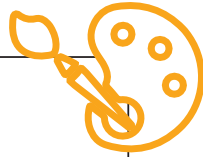
Promoted to Class	
Section	
New session begins on	





MY FAVOURITES THIS SESSION

Colour



Rhyme



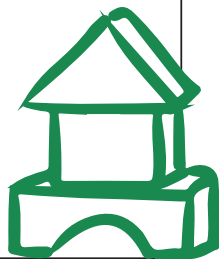
Story



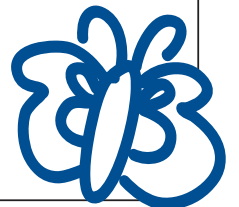
Food



Game



Animal



LEARNING EXPERIENCES I ENJOYED



Stories & Rhymes



Music & Movement



Art & Creative Expression



Outdoor Play



Circle Time

123

Number Activities



Sensory Experiences



Celebrations & Special Events



Language Activities





My Handprints

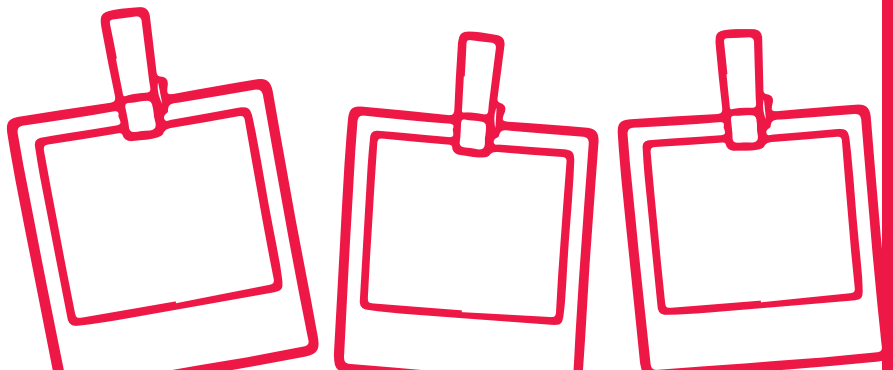
A large white rectangular area intended for drawing or writing.





A Special Memory with My Friends

A large white rectangular area for writing a story or memory.



SCHOOL CAMPUS

Jhatawa Kalan Road, P.O. Malsisar, Dist. Jhunjhunu, Rajasthan 331028

CALL +91 92578 48525

www.snsvm-malsisar.org