



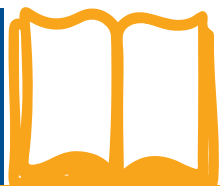
Sant Nandlal
Smriti Vidya Mandir

MALSISAR, RAJASTHAN

Affiliated to CBSE | Affiliation No. 1731249



abc



LKG



HOLISTIC
PROGRESS
CARD

LKG
SESSION 2026-27

Affix
Photo
Here

STUDENT'S PROFILE

NAME _____

SECTION _____ ENROLMENT NO. _____

DATE OF BIRTH _____



Capturing My Journey: A Visual Celebration

My Learning Adventures

TERM I

A large, empty white rectangular area intended for students to draw and illustrate their learning adventures.

DOMAIN-PHYSICAL DEVELOPMENT

Children develop habits that keep them healthy and safe

COMPETENCIES	Beginner	Emerging	Progressing	Proficient	Outstanding
Shows awareness of healthy and unhealthy food choices					
Practises basic self-care (handwashing, using the washroom with support)					
Manages personal belongings responsibly when prompted					
Follows simple safety rules (walks safely indoors, uses classroom materials safely)					
Recognises familiar personal information with understanding (name, teacher's name)					

Children develop sharpness in sensorial perceptions

COMPETENCIES	Beginner	Emerging	Progressing	Proficient	Outstanding
Identifies shapes and colours and notices simple differences (light/dark)					
Develops visual memory and matches symbols with the same pattern					
Recognises and differentiates sounds (loud/soft, familiar sounds)					
Identifies basic smells and tastes (sweet, sour, pleasant/unpleasant)					
Differentiates and compares two objects based on their properties (hard/soft, hot/cold)					





Children develop a fit and flexible body

COMPETENCIES	Beginner	Emerging	Progressing	Proficient	Outstanding
Shows basic balance and coordination during simple physical activities					
Participates in outdoor play with enthusiasm					
Follows simple game rules with guidance					
Uses hands and fingers effectively for basic tasks (holding, grasping, simple control)					

DOMAIN–SOCIO–EMOTIONAL AND ETHICAL DEVELOPMENT



Children develop emotional intelligence

COMPETENCIES	Beginner	Emerging	Progressing	Proficient	Outstanding
Shows positive social behaviour (polite, kind, follows rules)					
Interacts and cooperates well with peers					
Expresses and manages emotions appropriately					

Children develop a positive attitude towards productive work and service or 'seva'

COMPETENCIES	Beginner	Emerging	Progressing	Proficient	Outstanding
Lends a helping hand voluntarily					
Takes care of personal and school property					



Children develop a positive regard for the natural environment around them

COMPETENCIES	Beginner	Emerging	Progressing	Proficient	Outstanding
Explores and learns about the world around					
Demonstrates responsible behaviour in water usage					
Exhibits curiosity and eagerness to explore new concepts					
Helps keep the surroundings clean					



DOMAIN-COGNITIVE DEVELOPMENT

Children make sense of the world around them through observation and logical thinking

COMPETENCIES	Beginner	Emerging	Progressing	Proficient	Outstanding
Observes and expresses ideas about familiar surroundings					
Recognises self, family members, familiar people and places					
Explores nature through observation and participation					
Shows curiosity and follows basic rules while interacting with others					

Children develop mathematical understanding and abilities to recognise the world through quantities and shapes

COMPETENCIES	Beginner	Emerging	Progressing	Proficient	Outstanding
Recognises and counts numbers and shows basic number understanding					
Identifies the concepts of odd and even numbers					
Compares quantities correctly					
Identifies shapes and performs simple mathematical operations using objects and pictures					





DOMAIN–LANGUAGE AND LITERACY DEVELOPMENT

Children develop effective communication skills for day–to–day interactions

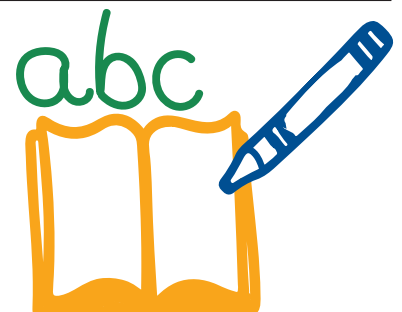
COMPETENCIES	Beginner	Emerging	Progressing	Proficient	Outstanding
Recites familiar rhymes and songs with actions					
Understands stories and identifies familiar characters					
Understands and follows simple oral instructions					
Uses simple vocabulary while speaking					

Children develop fluency in reading and writing in language 1 (English)

COMPETENCIES	Beginner	Emerging	Progressing	Proficient	Outstanding
Recognises letters, sounds and sight words					
Recognises picture–word association					
Reads letter with their phonic sounds					
Shows neat and correct letter formation					

Children develop fluency in reading and writing in language 2 (Hindi)

COMPETENCIES	Beginner	Emerging	Progressing	Proficient	Outstanding
Recognises letters and its sound					
Recognises picture–word association					
Reads letter with their correct sounds					
Shows neat and correct letter formation					



DOMAIN—AESTHETIC AND CULTURAL DEVELOPMENT



Children develop abilities and sensibilities in visual and performing arts and express their emotions through arts in meaningful and joyful ways

COMPETENCIES	Beginner	Emerging	Progressing	Proficient	Outstanding
Art & Craft					
Enjoys and participates in art activities					
Colours neatly and creates using imagination					
Music					
Enjoys music and sings in tune					
Shows a sense of rhythm					
Dance					
Enjoys dancing and expresses through movement					
Shows rhythm and graceful movements					

POSITIVE LEARNING HABITS

Children develop habits of learning that allow them to engage actively in formal learning environments such as a school classroom

COMPETENCIES	Beginner	Emerging	Progressing	Proficient	Outstanding
Participates in class activities					
Works independently					
Shows progress in following assigned tasks and practising self-control					
Expresses ideas using simple words and sentences					
Follows simple classroom rules					
Maintains a neat and tidy appearance					





LEARNER'S PROFILE

TERM I



CLASSROOM ATTENDANCE

TOTAL NUMBER OF WORKING DAYS _____

NUMBER OF DAYS PRESENT _____

PERCENTAGE OF ATTENDANCE _____

Class Teacher

Principal

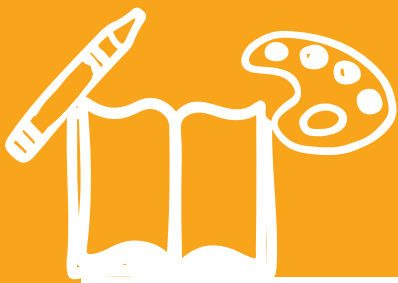
Parent





NOTES

A large, empty white rectangular area intended for writing notes.



Capturing My Journey: A Visual Celebration

My Learning Adventures

TERM II

A large, empty white rectangular area intended for students to draw and illustrate their learning adventures.

DOMAIN-PHYSICAL DEVELOPMENT

Children develop habits that keep them healthy and safe

COMPETENCIES	Beginner	Emerging	Progressing	Proficient	Outstanding
Shows awareness of healthy and unhealthy food choices					
Practises basic self-care (handwashing, using the washroom with support)					
Manages personal belongings responsibly when prompted					
Follows simple safety rules (walks safely indoors, uses classroom materials safely)					
Recognises familiar personal information with understanding (name, teacher's name)					

Children develop sharpness in sensorial perceptions

COMPETENCIES	Beginner	Emerging	Progressing	Proficient	Outstanding
Identifies shapes and colours and notices simple differences (light/dark)					
Develops visual memory and matches symbols with the same pattern					
Recognises and differentiates sounds (loud/soft, familiar sounds)					
Identifies basic smells and tastes (sweet, sour, pleasant/unpleasant)					
Differentiates and compares two objects based on their properties (hard/soft, hot/cold)					





Children develop a fit and flexible body

COMPETENCIES	Beginner	Emerging	Progressing	Proficient	Outstanding
Shows basic balance and coordination during simple physical activities					
Participates in outdoor play with enthusiasm					
Follows simple game rules with guidance					
Uses hands and fingers effectively for basic tasks (holding, grasping, simple control)					

DOMAIN–SOCIO–EMOTIONAL AND ETHICAL DEVELOPMENT



Children develop emotional intelligence

COMPETENCIES	Beginner	Emerging	Progressing	Proficient	Outstanding
Shows positive social behaviour (polite, kind, follows rules)					
Interacts and cooperates well with peers					
Expresses and manages emotions appropriately					

Children develop a positive attitude towards productive work and service or 'seva'

COMPETENCIES	Beginner	Emerging	Progressing	Proficient	Outstanding
Lends a helping hand voluntarily					
Takes care of personal and school property					



Children develop a positive regard for the natural environment around them

COMPETENCIES	Beginner	Emerging	Progressing	Proficient	Outstanding
Explores and learns about the world around					
Demonstrates responsible behaviour in water usage					
Exhibits curiosity and eagerness to explore new concepts					
Helps keep the surroundings clean					



DOMAIN-COGNITIVE DEVELOPMENT

Children make sense of the world around them through observation and logical thinking

COMPETENCIES	Beginner	Emerging	Progressing	Proficient	Outstanding
Observes patterns in the environment					
Shows creativity while creating their own patterns					
Explores and learns about animals					
Shows curiosity and follows basic rules while interacting with others					

Children develop mathematical understanding and abilities to recognise the world through quantities and shapes

COMPETENCIES	Beginner	Emerging	Progressing	Proficient	Outstanding
Demonstrates understanding of number sequencing and ordering concepts					
Applies comparison concepts					
Reads and writes number names					
Performs simple pictorial addition with objects or pictures					





Children develop effective communication skills for day-to-day interactions

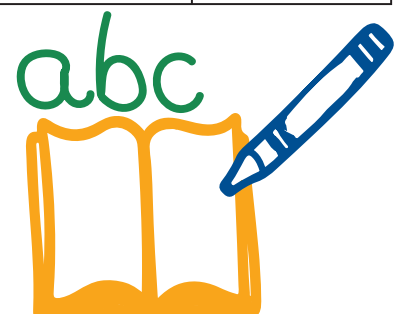
COMPETENCIES	Beginner	Emerging	Progressing	Proficient	Outstanding
Recites familiar rhymes and songs with actions					
Understands stories and identifies familiar characters					
Understands and follows simple oral instructions					
Speaks in simple sentences and engages in meaningful conversations					

Children develop fluency in reading and writing in language 1 (English)

COMPETENCIES	Beginner	Emerging	Progressing	Proficient	Outstanding
Reads CVC words					
Matches pictures with CVC words					
Writes simple words and sentences					
Uses spelling patterns correctly					
Completes writing work neatly					

Children develop fluency in reading and writing in language 2 (Hindi)

COMPETENCIES	Beginner	Emerging	Progressing	Proficient	Outstanding
Reads 2 letter words					
Matches pictures with associated words					
Writes simple 2 letter words					
Listens to and recognises sounds/ words					
Completes writing work neatly					



DOMAIN—AESTHETIC AND CULTURAL DEVELOPMENT



Children develop abilities and sensibilities in visual and performing arts and express their emotions through arts in meaningful and joyful ways

COMPETENCIES	Beginner	Emerging	Progressing	Proficient	Outstanding
Art & Craft					
Enjoys and participates in art activities					
Colours neatly and creates using imagination					
Music					
Enjoys music and sings in tune					
Shows a sense of rhythm					
Dance					
Enjoys dancing and expresses through movement					
Shows rhythm and graceful movements					

POSITIVE LEARNING HABITS

Children develop habits of learning that allow them to engage actively in formal learning environments such as a school classroom

COMPETENCIES	Beginner	Emerging	Progressing	Proficient	Outstanding
Participates in class activities					
Works independently					
Shows progress in following assigned tasks and practising self-control					
Expresses ideas using simple words and sentences					
Follows simple classroom rules					
Maintains a neat and tidy appearance					





LEARNER'S PROFILE

TERM II



CLASSROOM ATTENDANCE

TOTAL NUMBER OF WORKING DAYS _____

NUMBER OF DAYS PRESENT _____

PERCENTAGE OF ATTENDANCE _____

Class Teacher

Principal

Parent





NOTES

A large, empty white rectangular area intended for writing notes, framed by a thin white border.



Capturing My Journey: A Visual Celebration

My Learning Adventures

TERM III

A large, empty white rectangular area intended for students to draw and illustrate their learning adventures.

DOMAIN-PHYSICAL DEVELOPMENT

Children develop habits that keep them healthy and safe

COMPETENCIES	Beginner	Emerging	Progressing	Proficient	Outstanding
Shows awareness of healthy and unhealthy food choices					
Practises basic self-care (handwashing, using the washroom with support)					
Manages personal belongings responsibly when prompted					
Follows simple safety rules (walks safely indoors, uses classroom materials safely)					
Recognises familiar personal information with understanding (name, teacher's name)					

Children develop sharpness in sensorial perceptions

COMPETENCIES	Beginner	Emerging	Progressing	Proficient	Outstanding
Identifies shapes and colours and notices simple differences (light/dark)					
Develops visual memory and matches symbols with the same pattern					
Recognises and differentiates sounds (loud/soft, familiar sounds)					
Identifies basic smells and tastes (sweet, sour, pleasant/unpleasant)					
Differentiates and compares two objects based on their properties (hard/soft, hot/cold)					





Children develop a fit and flexible body

COMPETENCIES	Beginner	Emerging	Progressing	Proficient	Outstanding
Shows basic balance and coordination during simple physical activities					
Participates in outdoor play with enthusiasm					
Follows simple game rules with guidance					
Uses hands and fingers effectively for basic tasks (holding, grasping, simple control)					

DOMAIN–SOCIO–EMOTIONAL AND ETHICAL DEVELOPMENT



Children develop emotional intelligence

COMPETENCIES	Beginner	Emerging	Progressing	Proficient	Outstanding
Shows positive social behaviour (polite, kind, follows rules)					
Interacts and cooperates well with peers					
Expresses and manages emotions appropriately					

Children develop a positive attitude towards productive work and service or 'seva'

COMPETENCIES	Beginner	Emerging	Progressing	Proficient	Outstanding
Lends a helping hand voluntarily					
Takes care of personal and school property					



Children develop a positive regard for the natural environment around them

COMPETENCIES	Beginner	Emerging	Progressing	Proficient	Outstanding
Explores and learns about the world around					
Demonstrates responsible behaviour in water usage					
Exhibits curiosity and eagerness to explore new concepts					
Helps keep the surroundings clean					



DOMAIN-COGNITIVE DEVELOPMENT

Children make sense of the world around them through observation and logical thinking

COMPETENCIES	Beginner	Emerging	Progressing	Proficient	Outstanding
Explores and learns about plants					
Demonstrates care and compassion for plants					
Shows awareness of safe behaviour on the road					
Recognises common vehicles and their uses					
Identifies people who help us travel safely					

Children develop mathematical understanding and abilities to recognise the world through quantities and shapes

COMPETENCIES	Beginner	Emerging	Progressing	Proficient	Outstanding
Demonstrates understanding of number sequencing and ordering concepts					
Applies comparison concepts					
Reads and writes number names					
Applies the concepts of odd and even numbers					
Performs simple subtractions using objects or pictures					





DOMAIN—LANGUAGE AND LITERACY DEVELOPMENT

Children develop effective communication skills for day-to-day interactions

COMPETENCIES	Beginner	Emerging	Progressing	Proficient	Outstanding
Recites familiar rhymes and songs with actions					
Uses simple sentences while narrating stories					
Speaks in simple sentences and engages in meaningful conversations					
Speaks confidently in class activities					

Children develop fluency in reading and writing in language 1 (English)

COMPETENCIES	Beginner	Emerging	Progressing	Proficient	Outstanding
Reads simple sentences with CVC words					
Uses spelling patterns correctly					
Writes simple words and sentences					
Applies phonics knowledge during reading and writing					
Completes writing work neatly					

Children develop fluency in reading and writing in language 2 (Hindi)

COMPETENCIES	Beginner	Emerging	Progressing	Proficient	Outstanding
Reads simple sentences					
Writes simple words and sentences					
Applies acquired knowledge during reading and writing					
Completes writing work neatly					



DOMAIN—AESTHETIC AND CULTURAL DEVELOPMENT



Children develop abilities and sensibilities in visual and performing arts and express their emotions through arts in meaningful and joyful ways

COMPETENCIES	Beginner	Emerging	Progressing	Proficient	Outstanding
Art & Craft					
Enjoys and participates in art activities					
Colours neatly and creates using imagination					
Music					
Enjoys music and sings in tune					
Shows a sense of rhythm					
Dance					
Enjoys dancing and expresses through movement					
Shows rhythm and graceful movements					

POSITIVE LEARNING HABITS

Children develop habits of learning that allow them to engage actively in formal learning environments such as a school classroom

COMPETENCIES	Beginner	Emerging	Progressing	Proficient	Outstanding
Participates in class activities					
Works independently					
Shows progress in following assigned tasks and practising self-control					
Expresses ideas using simple words and sentences					
Follows simple classroom rules					
Maintains a neat and tidy appearance					





LEARNER'S PROFILE

TERM III



CLASSROOM ATTENDANCE

TOTAL NUMBER OF WORKING DAYS _____

NUMBER OF DAYS PRESENT _____

PERCENTAGE OF ATTENDANCE _____

Class Teacher

Principal

Parent





NOTES

A large, empty white rectangular area intended for writing notes.

DOMAIN-PHYSICAL DEVELOPMENT

Children develop habits that keep them healthy and safe

COMPETENCIES	TERM I	TERM II	TERM III
Shows awareness of healthy and unhealthy food choices			
Practices basic self-care (handwashing, using the washroom with support)			
Manages personal belongings responsibly when prompted			
Follows simple safety rules (walks safely indoors, uses classroom materials safely)			
Recognises familiar personal information with understanding (name, teacher's name)			

Children develop sharpness in sensorial perceptions

COMPETENCIES	TERM I	TERM II	TERM III
Identifies shapes and colours and notices simple differences (light/dark)			
Develops visual memory and matches symbols with the same pattern			
Recognises and differentiates sounds (loud/soft, familiar sounds)			
Identifies basic smells and tastes (sweet, sour, pleasant/unpleasant)			
Differentiates and compares two objects based on their properties (hard/soft, hot/cold)			





Children develop a fit and flexible body

COMPETENCIES	TERM I	TERM II	TERM III
Shows basic balance and coordination during simple physical activities			
Participates in outdoor play with enthusiasm			
Follows simple game rules with guidance			
Uses hands and fingers effectively for basic tasks (holding, grasping, simple control)			

DOMAIN–SOCIO –EMOTIONAL AND ETHICAL DEVELOPMENT



Children develop emotional intelligence

COMPETENCIES	TERM I	TERM II	TERM III
Shows positive social behaviour (polite, kind, follows rules)			
Interacts and cooperates well with peers			
Expresses and manages emotions appropriately			

Children develop a positive attitude towards productive work and service or 'seva'

COMPETENCIES	TERM I	TERM II	TERM III
Lends a helping hand voluntarily			
Takes care of personal and school property			



Children develop a positive regard for the natural environment around them

COMPETENCIES	TERM I	TERM II	TERM III
Explores and learns about the world around			
Demonstrates responsible behaviour in water usage			
Exhibits curiosity and eagerness to explore new concepts			
Helps keep the surroundings clean			

DOMAIN-COGNITIVE DEVELOPMENT

abc

Children make sense of the world around them through observation and logical thinking

COMPETENCIES	TERM I	TERM II	TERM III
Observes and expresses ideas about familiar surroundings		NA	NA
Recognises self, family members, familiar people and places		NA	NA
Explores nature through observation and participation		NA	NA
Shows curiosity and follows basic rules while interacting with others			NA
Observes patterns in the environment	NA		NA
Shows creativity while creating their own patterns	NA		NA
Explores and learns about animals	NA		NA
Explores and learns about plants	NA	NA	
Demonstrates care and compassion for plants	NA	NA	
Shows awareness of safe behaviour on the road	NA	NA	
Recognises common vehicles and their uses	NA	NA	
Identifies people who help us travel safely	NA	NA	





Children develop mathematical understanding and abilities to recognise the world through quantities and shapes

COMPETENCIES	TERM I	TERM II	TERM III
Recognises and counts numbers and shows basic number understanding		NA	NA
Identifies the concepts of odd and even numbers		NA	NA
Identifies shapes and performs simple mathematical operations using objects and pictures		NA	NA
Compares quantities correctly		NA	NA
Applies the concept of odd and even numbers	NA	NA	
Demonstrates understanding of number sequencing and ordering concepts	NA		
Applies comparison concepts	NA		
Reads and writes number names	NA		
Performs simple pictorial addition using objects or pictures	NA		NA
Performs simple subtraction using objects or pictures	NA	NA	

DOMAIN—LANGUAGE AND LITERACY DEVELOPMENT

Children develop effective communication skills for day-to-day interactions

COMPETENCIES	TERM I	TERM II	TERM III
Recites familiar rhymes and songs with actions			
Understands stories and identifies familiar characters			NA
Understands and follows simple oral instructions			NA
Uses simple vocabulary while speaking		NA	NA
Speaks in simple sentences and engages in meaningful conversations	NA		
Uses simple sentences while narrating stories	NA	NA	
Speaks confidently in class activities	NA	NA	



Children develop fluency in reading and writing in language 1 (English)



COMPETENCIES	TERM I	TERM II	TERM III
Recognises letters, sounds and sight words		NA	NA
Recognises picture-word association		NA	NA
Reads letters with their phonic sounds		NA	NA
Shows neat and correct letter formation		NA	NA
Reads CVC words	NA		NA
Matches pictures with CVC words	NA		NA
Uses spelling patterns correctly	NA		
Completes writing work neatly	NA		
Reads simple sentences with CVC words	NA	NA	
Writes simple words and sentences	NA		
Applies phonics knowledge during reading and writing	NA	NA	

Children develop fluency in reading and writing in language 2 (Hindi)



COMPETENCIES	TERM I	TERM II	TERM III
Recognises letters and its sounds		NA	NA
Recognises picture-word association		NA	NA
Reads letters with their correct sounds		NA	NA
Shows neat and correct letter formation		NA	NA
Reads 2 letter words	NA		NA
Matches pictures with associated words	NA		NA
Listens to and recognises sounds/ words	NA		NA
Completes writing work neatly	NA		
Reads simple sentences	NA	NA	
Writes simple words and sentences	NA		
Applies acquired knowledge during reading and writing	NA	NA	





DOMAIN–AESTHETIC AND CULTURAL DEVELOPMENT

Children develop abilities and sensibilities in visual and performing arts and express their emotions through arts in meaningful and joyful ways

COMPETENCIES	TERM I	TERM II	TERM III
Art & Craft			
Enjoys and participates in art activities			
Colours neatly and creates using imagination			
Music			
Enjoys music and sings in tune			
Shows a sense of rhythm			
Dance			
Enjoys dancing and expresses through movement			
Shows rhythm and graceful movements			

POSITIVE LEARNING HABITS

Children develop habits of learning that allow them to engage actively in formal learning environments such as a school classroom

COMPETENCIES	TERM I	TERM II	TERM III
Participates in class activities			
Works independently			
Shows progress in following assigned tasks and practicing self-control			
Expresses ideas using simple words and sentences			
Follows simple classroom rules			
Maintains a neat and tidy appearance			

NA: Not Applicable



CUMULATIVE CLASSROOM ATTENDANCE

TOTAL NUMBER OF WORKING DAYS IN THE SESSION _____

TOTAL NUMBER OF DAYS PRESENT IN THE SESSION _____

PERCENTAGE OF ATTENDANCE _____

LEGEND

The competencies are to be interpreted at various levels on the basis of the following description

Level	Competency
Beginner (BG)	Tries to achieve the competency and associated learning outcome with constant support from the teacher
Emerging (EM)	Tries to achieve the competency and associated learning outcome with occasional support from the teacher
Progressing (PR)	Achieves the competency and associated learning outcome with occasional support from the teacher
Proficient (PF)	Achieves the competency and associated learning outcome independently
Outstanding (OS)	Consistently achieves the competency and associated learning outcome independently, demonstrating deep understanding and application

YOU ARE READY TO FLY HIGHER!



Promoted to Class	
Section	
New session begins on	



SCHOOL CAMPUS

Jhatawa Kalan Road, P.O. Malsisar, Dist. Jhunjhunu, Rajasthan 331028

CALL +91 92578 48525
www.snsvm-malsisar.org