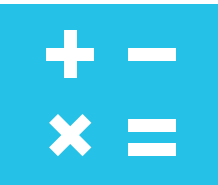




Sant Nandlal  
Smriti Vidya Mandir

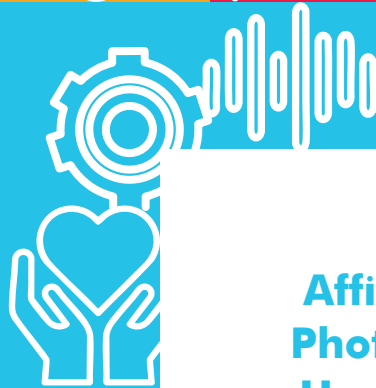
MALSISAR, RAJASTHAN

Affiliated to CBSE | Affiliation No. 1731249



# HOLISTIC PROGRESS CARD

CLASS I  
SESSION 2026-27



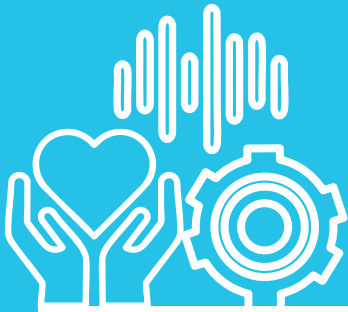
Affix  
Photo  
Here

STUDENT'S PROFILE

NAME \_\_\_\_\_

SECTION \_\_\_\_\_ ENROLMENT NO \_\_\_\_\_

DATE OF BIRTH \_\_\_\_\_



# Capturing My Journey: A Visual Celebration

My Learning Adventures

TERM I

A large, empty white rectangular area intended for students to draw or write their visual celebration of their learning journey.

## DOMAIN–PHYSICAL DEVELOPMENT

### Children develop habits that keep them healthy and safe

COMPETENCIES	Beginner	Emerging	Progressing	Proficient	Outstanding
Practises personal hygiene					
Takes care of personal belongings					
Follows safety rules					
Knows personal information					

### Children develop sharpness in sensorial perceptions

COMPETENCIES	Beginner	Emerging	Progressing	Proficient	Outstanding
Demonstrates awareness of sensorial perceptions leading to enriching experiences					
Groups objects based on their characteristics					

### Children develop a fit and flexible body

COMPETENCIES	Beginner	Emerging	Progressing	Proficient	Outstanding
Exhibits balance, strength, flexibility and body control across physical activities					
Demonstrates physical fitness and coordination					
Participates actively in outdoor play					
Understands the rules of simple games					



**DOMAIN–SOCIO–EMOTIONAL AND ETHICAL DEVELOPMENT**

**Children develop emotional intelligence**

COMPETENCIES	Beginner	Emerging	Progressing	Proficient	Outstanding
Shows polite behaviour and follows classroom and play rules					
Shows kindness, empathy, care and cooperation with others					
Interacts positively and enjoys being with peers					
Expresses and manages emotions appropriately					

**Children develop a positive attitude towards productive work and service or ‘seva’**

COMPETENCIES	Beginner	Emerging	Progressing	Proficient	Outstanding
Lends a helping hand and contributes to shared tasks					
Shows pride and a sense of belonging in the school					
Is willing to accept responsibilities					

**Children develop a positive regard for the natural environment around them**

COMPETENCIES	Beginner	Emerging	Progressing	Proficient	Outstanding
Shows a sense of responsibility towards the environment					
Respects diversity and includes everyone					





## DOMAIN-COGNITIVE DEVELOPMENT

### Children make sense of the world around them through observation and logical thinking

COMPETENCIES	Beginner	Emerging	Progressing	Proficient	Outstanding
Observes and describes surroundings and notices details in everyday life					
Sorts, groups and identifies patterns in objects and the environment					
Understands self and surroundings, including feelings, people and the neighbourhood					
Observes and understands basic cause-and-effect relationships					
Applies acquired knowledge to real-life situations					
Participates actively and presents ideas with confidence					

### Children develop mathematical understanding and abilities to recognise the world through quantities, shapes and measures

COMPETENCIES	Beginner	Emerging	Progressing	Proficient	Outstanding
Reads and writes number names and numerals					
Understands and applies basic number concepts					
Applies mathematical concepts in everyday situations					
Applies learning through activities					
Participates actively and presents ideas with confidence					





## Computer Science

COMPETENCIES	Beginner	Emerging	Progressing	Proficient	Outstanding
Understands basic computer concepts and uses simple applications					
Follows instructions and demonstrates basic logical thinking using digital tools					
Uses digital tools creatively and participates in activities independently and with others					

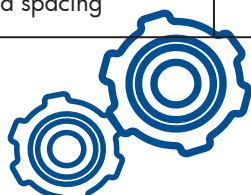
## DOMAIN–LANGUAGE AND LITERACY DEVELOPMENT

### Children develop effective communication skills for day–to–day interactions

COMPETENCIES	Beginner	Emerging	Progressing	Proficient	Outstanding
Listens to and understands poems and simple prose					
Speaks in simple sentences using correct words and basic grammar					
Understands and follows oral instructions in classroom situations					
Comprehends stories and identifies characters and main ideas					

### Children develop fluency in reading and writing in language 1 (English)

COMPETENCIES	Beginner	Emerging	Progressing	Proficient	Outstanding
Reads simple words, sentences and short texts with accuracy and fluency					
Understands and responds to written texts appropriately					
Forms simple sentences to express ideas in writing					
Uses correct grammar and spellings in written work					
Writes neatly with proper letter formation and spacing					





**Children develop fluency in reading and writing in language 2 (Hindi)**

COMPETENCIES	Beginner	Emerging	Progressing	Proficient	Outstanding
Shows interest and participates					
Listens to and recognises sounds/words					
Reads prescribed texts					
Understands and interprets what is read					
Uses correct spellings and grammar in written work					
Writes neatly with proper letter formation and spacing					

**DOMAIN-AESTHETIC AND CULTURAL DEVELOPMENT**

**Children develop abilities and sensibilities in visual and performing arts and express their emotions through arts in meaningful and joyful ways**

COMPETENCIES	Beginner	Emerging	Progressing	Proficient	Outstanding
<b>Art &amp; Craft</b>					
Enjoys and participates in art activities					
Colours neatly and creates art using imagination					
Demonstrates creativity and imagination in sculpture work					
<b>Music</b>					
Enjoys music and sings in tune					
Shows a sense of rhythm					
<b>Dance</b>					
Enjoys dancing and expresses through movement					
Shows rhythm and graceful movements					





## POSITIVE LEARNING HABITS



Children develop habits of learning that allow them to engage actively in formal learning environments such as a school classroom

COMPETENCIES	Beginner	Emerging	Progressing	Proficient	Outstanding
Participates in class activities					
Works independently					
Finishes work within the stipulated time					
Works well in a group					
Focuses on the task at hand					
Adapts to classroom rules					
Maintains a neat and tidy appearance					



# LEARNER'S PROFILE

## TERM I

---

---

---

---

---

---

---

---

---

---



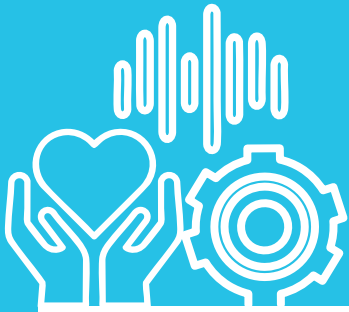
### CLASSROOM ATTENDANCE

TOTAL NUMBER OF WORKING DAYS \_\_\_\_\_

NUMBER OF DAYS PRESENT \_\_\_\_\_

PERCENTAGE OF ATTENDANCE \_\_\_\_\_





# Capturing My Journey: A Visual Celebration

My Learning Adventures

TERM II

A large, empty white rectangular area intended for students to draw and illustrate their learning journey.

## DOMAIN-PHYSICAL DEVELOPMENT

### Children develop habits that keep them healthy and safe

COMPETENCIES	Beginner	Emerging	Progressing	Proficient	Outstanding
Practises personal hygiene					
Takes care of personal belongings					
Follows safety rules					
Knows personal information					

### Children develop sharpness in sensorial perceptions

COMPETENCIES	Beginner	Emerging	Progressing	Proficient	Outstanding
Demonstrates awareness of sensorial perceptions leading to enriching experiences					
Groups objects based on their characteristics					

### Children develop a fit and flexible body

COMPETENCIES	Beginner	Emerging	Progressing	Proficient	Outstanding
Exhibits balance, strength, flexibility and body control across physical activities					
Demonstrates physical fitness and coordination					
Participates actively in outdoor play					
Understands the rules of simple games					



**DOMAIN–SOCIO–EMOTIONAL AND ETHICAL DEVELOPMENT**

**Children develop emotional intelligence**

COMPETENCIES	Beginner	Emerging	Progressing	Proficient	Outstanding
Shows polite behaviour and follows classroom and play rules					
Shows kindness, empathy, care and cooperation with others					
Interacts positively and enjoys being with peers					
Expresses and manages emotions appropriately					

**Children develop a positive attitude towards productive work and service or ‘seva’**

COMPETENCIES	Beginner	Emerging	Progressing	Proficient	Outstanding
Lends a helping hand and contributes to shared tasks					
Shows pride and a sense of belonging in the school					
Is willing to accept responsibilities					

**Children develop a positive regard for the natural environment around them**

COMPETENCIES	Beginner	Emerging	Progressing	Proficient	Outstanding
Shows a sense of responsibility towards the environment					
Respects diversity and includes everyone					





## DOMAIN-COGNITIVE DEVELOPMENT

### Children make sense of the world around them through observation and logical thinking

COMPETENCIES	Beginner	Emerging	Progressing	Proficient	Outstanding
Observes and describes surroundings and notices details in everyday life					
Sorts, groups and identifies patterns in objects and the environment					
Understands self and surroundings, including feelings, people and the neighbourhood					
Observes and understands basic cause-and-effect relationships					
Applies acquired knowledge to real-life situations					
Participates actively and presents ideas with confidence					

### Children develop mathematical understanding and abilities to recognise the world through quantities, shapes and measures

COMPETENCIES	Beginner	Emerging	Progressing	Proficient	Outstanding
Reads and writes number names and numerals					
Understands and applies basic number concepts					
Applies mathematical concepts in everyday situations					
Applies learning through activities					
Participates actively and presents ideas with confidence					





## Computer Science

COMPETENCIES	Beginner	Emerging	Progressing	Proficient	Outstanding
Understands basic computer concepts and uses simple applications					
Follows instructions and demonstrates basic logical thinking using digital tools					
Uses digital tools creatively and participates in activities independently and with others					

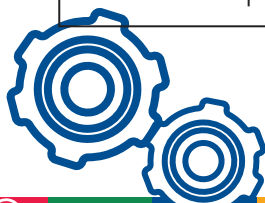
## DOMAIN–LANGUAGE AND LITERACY DEVELOPMENT

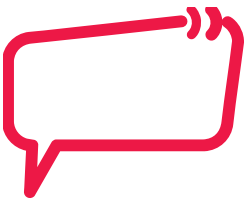
### Children develop effective communication skills for day–to–day interactions

COMPETENCIES	Beginner	Emerging	Progressing	Proficient	Outstanding
Listens to and understands poems and simple prose					
Speaks in simple sentences using correct words and basic grammar					
Understands and follows oral instructions in classroom situations					
Comprehends stories, identifies characters and main ideas					

### Children develop fluency in reading and writing in language 1 (English)

COMPETENCIES	Beginner	Emerging	Progressing	Proficient	Outstanding
Reads simple words, sentences and short texts with accuracy and fluency					
Understands and responds to written texts appropriately					
Forms simple sentences to express ideas in writing					
Uses correct grammar and spellings in written work					
Writes neatly with proper letter formation and spacing					





### Children develop fluency in reading and writing in language 2 (Hindi)

COMPETENCIES	Beginner	Emerging	Progressing	Proficient	Outstanding
Shows interest and participates					
Listens to and recognises sounds/words					
Reads prescribed texts					
Understands and interprets what is read					
Uses correct spellings and grammar in written work					
Writes neatly with proper letter formation and spacing					

### DOMAIN—AESTHETIC AND CULTURAL DEVELOPMENT

#### Children develop abilities and sensibilities in visual and performing arts and express their emotions through arts in meaningful and joyful ways

COMPETENCIES	Beginner	Emerging	Progressing	Proficient	Outstanding
<b>Art &amp; Craft</b>					
Enjoys and participates in art activities					
Colours neatly and creates art using imagination					
Demonstrates creativity and imagination in sculpture work					
<b>Music</b>					
Enjoys music and sings in tune					
Shows a sense of rhythm					
<b>Dance</b>					
Enjoys dancing and expresses through movement					
Shows rhythm and graceful movements					





**POSITIVE LEARNING HABITS**

**Children develop habits of learning that allow them to engage actively in formal learning environments such as a school classroom**

COMPETENCIES	Beginner	Emerging	Progressing	Proficient	Outstanding
Participates in class activities					
Works independently					
Finishes work within the stipulated time					
Works well in a group					
Focuses on the task at hand					
Adapts to classroom rules					
Maintains a neat and tidy appearance					



# LEARNER'S PROFILE

## TERM II

---

---

---

---

---

---

---

---

---

---



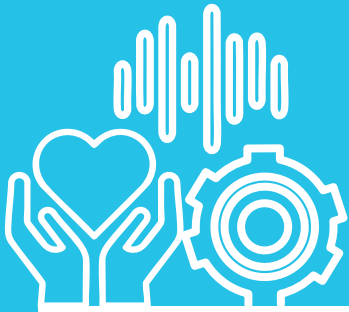
### CLASSROOM ATTENDANCE

TOTAL NUMBER OF WORKING DAYS \_\_\_\_\_

NUMBER OF DAYS PRESENT \_\_\_\_\_

PERCENTAGE OF ATTENDANCE \_\_\_\_\_





# Capturing My Journey: A Visual Celebration

My Learning Adventures

TERM III

A large, empty white rectangular area intended for students to draw or write about their learning journey.

## DOMAIN-PHYSICAL DEVELOPMENT

### Children develop habits that keep them healthy and safe

COMPETENCIES	Beginner	Emerging	Progressing	Proficient	Outstanding
Practises personal hygiene					
Takes care of personal belongings					
Follows safety rules					
Knows personal information					

### Children develop sharpness in sensorial perceptions

COMPETENCIES	Beginner	Emerging	Progressing	Proficient	Outstanding
Demonstrates awareness of sensorial perceptions leading to enriching experiences					
Groups objects based on their characteristics					

### Children develop a fit and flexible body

COMPETENCIES	Beginner	Emerging	Progressing	Proficient	Outstanding
Exhibits balance, strength, flexibility and body control across physical activities					
Demonstrates physical fitness and coordination					
Participates actively in outdoor play					
Understands the rules of simple games					





## DOMAIN–SOCIO–EMOTIONAL AND ETHICAL DEVELOPMENT

### Children develop emotional intelligence

COMPETENCIES	Beginner	Emerging	Progressing	Proficient	Outstanding
Shows polite behaviour and follows classroom and play rules					
Shows kindness, empathy, care and cooperation with others					
Interacts positively and enjoys being with peers					
Expresses and manages emotions appropriately					

### Children develop a positive attitude towards productive work and service or 'seva'

COMPETENCIES	Beginner	Emerging	Progressing	Proficient	Outstanding
Lends a helping hand and contributes to shared tasks					
Shows pride and a sense of belonging in the school					
Is willing to accept responsibilities					

### Children develop a positive regard for the natural environment around them

COMPETENCIES	Beginner	Emerging	Progressing	Proficient	Outstanding
Shows a sense of responsibility towards the environment					
Respects diversity and includes everyone					





## DOMAIN-COGNITIVE DEVELOPMENT

### Children make sense of the world around them through observation and logical thinking

COMPETENCIES	Beginner	Emerging	Progressing	Proficient	Outstanding
Observes and describes surroundings and notices details in everyday life					
Sorts, groups and identifies patterns in objects and the environment					
Understands self and surroundings, including feelings, people and the neighbourhood					
Observes and understands basic cause-and-effect relationships					
Applies acquired knowledge to real-life situations					
Participates actively and presents ideas with confidence					

### Children develop mathematical understanding and abilities to recognise the world through quantities, shapes and measures

COMPETENCIES	Beginner	Emerging	Progressing	Proficient	Outstanding
Reads and writes number names and numerals					
Understands and applies basic number concepts					
Applies mathematical concepts in everyday situations					
Applies learning through activities					
Participates actively and presents ideas with confidence					



### Computer Science

COMPETENCIES	Beginner	Emerging	Progressing	Proficient	Outstanding
Understands basic computer concepts and uses simple applications					
Follows instructions and demonstrates basic logical thinking using digital tools					
Uses digital tools creatively and participates in activities independently and with others					

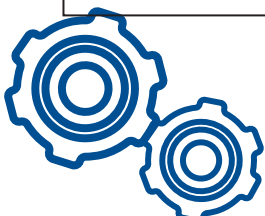
### DOMAIN–LANGUAGE AND LITERACY DEVELOPMENT

#### Children develop effective communication skills for day–to–day interactions

COMPETENCIES	Beginner	Emerging	Progressing	Proficient	Outstanding
Listens to and understands poems and simple prose					
Speaks in simple sentences using correct words and basic grammar					
Understands and follows oral instructions in classroom situations					
Comprehends stories and identifies characters and main ideas					

#### Children develop fluency in reading and writing in language 1 (English)

COMPETENCIES	Beginner	Emerging	Progressing	Proficient	Outstanding
Reads simple words, sentences and short texts with accuracy and fluency					
Understands and responds to written texts appropriately					
Forms simple sentences to express ideas in writing					
Uses correct grammar and spellings in written work					
Writes neatly with proper letter formation and spacing					





### Children develop fluency in reading and writing in language 2 (Hindi)

COMPETENCIES	Beginner	Emerging	Progressing	Proficient	Outstanding
Shows interest and participates					
Listens to and recognises sounds/words					
Reads prescribed texts					
Understands and interprets what is read					
Uses correct spellings and grammar in written work					
Writes neatly with proper letter formation and spacing					

### DOMAIN-AESTHETIC AND CULTURAL DEVELOPMENT

Children develop abilities and sensibilities in visual and performing arts and express their emotions through arts in meaningful and joyful ways

COMPETENCIES	Beginner	Emerging	Progressing	Proficient	Outstanding
<b>Art &amp; Craft</b>					
Enjoys and participates in art activities					
Colours neatly and creates art using imagination					
Demonstrates creativity and imagination in sculpture work					
<b>Music</b>					
Enjoys music and sings in tune					
Shows a sense of rhythm					
<b>Dance</b>					
Enjoys dancing and expresses through movement					
Shows rhythm and graceful movements					





## POSITIVE LEARNING HABITS

Children develop habits of learning that allow them to engage actively in formal learning environments such as a school classroom

COMPETENCIES	Beginner	Emerging	Progressing	Proficient	Outstanding
Participates in class activities					
Works independently					
Finishes work within the stipulated time					
Works well in a group					
Focuses on the task at hand					
Adapts to classroom rules					
Maintains a neat and tidy appearance					



# LEARNER'S PROFILE

## TERM III

---

---

---

---

---

---

---

---

---

---



### CLASSROOM ATTENDANCE

TOTAL NUMBER OF WORKING DAYS \_\_\_\_\_

NUMBER OF DAYS PRESENT \_\_\_\_\_

PERCENTAGE OF ATTENDANCE \_\_\_\_\_





# Overall Annual Performance Summary



## DOMAIN–PHYSICAL DEVELOPMENT

### Children develop habits that keep them healthy and safe

COMPETENCIES	TERM I	TERM II	TERM III
Practises personal hygiene			
Takes care of personal belongings			
Follows safety rules			
Knows personal information			

### Children develop sharpness in sensorial perceptions

COMPETENCIES	TERM I	TERM II	TERM III
Demonstrates awareness of sensorial perceptions leading to enriching experiences			
Groups objects based on their characteristics			

### Children develop a fit and flexible body

COMPETENCIES	TERM I	TERM II	TERM III
Exhibits balance, strength, flexibility and body control across physical activities			
Demonstrates physical fitness and coordination			
Participates actively in outdoor play			
Understands the rules of simple games			





## DOMAIN–SOCIO–EMOTIONAL AND ETHICAL DEVELOPMENT

### Children develop emotional intelligence

COMPETENCIES	TERM I	TERM II	TERM III
Shows polite behaviour and follows classroom and play rules			
Shows kindness, empathy, care and cooperation with others			
Interacts positively and enjoys being with peers			
Expresses and manages emotions appropriately			

### Children develop a positive attitude towards productive work and service or 'seva'

COMPETENCIES	TERM I	TERM II	TERM III
Lends a helping hand and contributes to shared tasks			
Shows pride and a sense of belonging in the school			
Is willing to accept responsibilities			

### Children develop a positive regard for the natural environment around them

COMPETENCIES	TERM I	TERM II	TERM III
Shows a sense of responsibility towards the environment			
Respects diversity and includes everyone			





## DOMAIN-COGNITIVE DEVELOPMENT

### Children make sense of the world around them through observation and logical thinking

COMPETENCIES	TERM I	TERM II	TERM III
Observes and describes surroundings and notices details in everyday life			
Sorts, groups and identifies patterns in objects and the environment			
Understands self and surroundings, including feelings, people and the neighbourhood			
Observes and understands basic cause-and-effect relationships			
Applies acquired knowledge to real-life situations			
Participates actively and presents ideas with confidence			

### Children develop mathematical understanding and abilities to recognise the world through quantities, shapes and measures

COMPETENCIES	TERM I	TERM II	TERM III
Reads and writes number names and numerals			
Understands and applies basic number concepts			
Applies mathematical concepts in everyday situations			
Applies learning through activities			
Participates actively and presents ideas with confidence			





## Computer Science

COMPETENCIES	TERM I	TERM II	TERM III
Understands basic computer concepts and uses simple applications			
Follows instructions and demonstrates basic logical thinking using digital tools			
Uses digital tools creatively and participates in activities independently and with others			

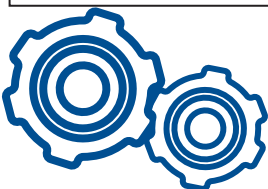
## DOMAIN–LANGUAGE AND LITERACY DEVELOPMENT

### Children develop effective communication skills for day–to–day interactions

COMPETENCIES	TERM I	TERM II	TERM III
Listens to and understands poems and simple prose			
Speaks in simple sentences using correct words and basic grammar			
Understands and follows oral instructions in classroom situations			
Comprehends stories and identifies characters and main ideas			

### Children develop fluency in reading and writing in language 1 (English)

COMPETENCIES	TERM I	TERM II	TERM III
Reads simple words, sentences and short texts with accuracy and fluency			
Understands and responds to written texts appropriately			
Forms simple sentences to express ideas in writing			
Uses correct grammar and spellings in written work			
Writes neatly with proper letter formation and spacing			





### Children develop fluency in reading and writing in language 2 (Hindi)

COMPETENCIES	TERM I	TERM II	TERM III
Shows interest and participates			
Listens to and recognises sounds/words			
Reads prescribed texts			
Understands and interprets what is read			
Uses correct spellings and grammar in written work			
Writes neatly with proper letter formation and spacing			

### DOMAIN-AESTHETIC AND CULTURAL DEVELOPMENT

#### Children develop abilities and sensibilities in visual and performing arts and express their emotions through arts in meaningful and joyful ways

COMPETENCIES	TERM I	TERM II	TERM III
<b>Art &amp; Craft</b>			
Enjoys and participates in art activities			
Colours neatly and creates art using imagination			
Demonstrates creativity and imagination in sculpture work			
<b>Music</b>			
Enjoys music and sings in tune			
Shows a sense of rhythm			
<b>Dance</b>			
Enjoys dancing and expresses through movement			
Shows rhythm and graceful movements			





## POSITIVE LEARNING HABITS



**Children develop habits of learning that allow them to engage actively in formal learning environments such as a school classroom**

COMPETENCIES	TERM I	TERM II	TERM III
Participates in class activities			
Works independently			
Finishes work within the stipulated time			
Works well in a group			
Focuses on the task at hand			
Adapts to classroom rules			
Maintains a neat and tidy appearance			



## CUMULATIVE CLASSROOM ATTENDANCE

TOTAL NUMBER OF WORKING DAYS IN THE SESSION \_\_\_\_\_

TOTAL NUMBER OF DAYS PRESENT IN THE SESSION \_\_\_\_\_

PERCENTAGE OF ATTENDANCE \_\_\_\_\_

### LEGEND

The competencies are to be interpreted at various levels on the basis of the following description

Level	Competency
Beginner (BG)	Tries to achieve the competency and associated learning outcome with constant support from the teacher
Emerging (EM)	Tries to achieve the competency and associated learning outcome with occasional support from the teacher
Progressing (PR)	Achieves the competency and associated learning outcome with occasional support from the teacher
Proficient (PF)	Achieves the competency and associated learning outcome independently
Outstanding (OS)	Consistently achieves the competency and associated learning outcome independently, demonstrating deep understanding and application

### YOU ARE READY TO FLY HIGHER!

Promoted to Class	
Section	
New session begins on	



**SCHOOL CAMPUS**

Jhatawa Kalan Road, P.O. Malsisar, Dist. Jhunjhunu, Rajasthan 331028

**CALL +91 92578 48525**  
**[www.snsvm-malsisar.org](http://www.snsvm-malsisar.org)**